

PEDAL POWERED WASHING MACHINE DESIGNED IN INDIA

By Ivan Lawrence White

Remya Jose, a girl of 14 years from Kizhattoor, Panchayat, in India, designed and created a pedal machine to do laundry without polluting. This pedal washing machine, similar to a stationary bike, allows to wash laundry, saving time and effort compared to hand washing.

The creative spirit of youth is strongly promoted and supported by local political and other national initiatives in India. In particular, the [National Innovation Foundation NIF](#) promotes and implements several initiatives that give space to the innovative capacity of young people. Through NIF, the Indian Department of Science and Technology has the task to identify and promote innovations with an emphasis on those that highlight local traditions.

In this case, it is an innovation that meets the specific problems of women in India, likewise in rural areas of many other countries, whereby women often wash clothes in waters of rivers distant away from their villages. Doing hand wash laundry often also means devoting many hours of the day to the activity, exposing to health risks because of the efforts required from the back and arms, and the damage caused to the respiratory system by damp clothing.

The pedal powered washing machine designed by Remya Jose is entirely sustainable and emission-free. It consists of spare parts and skeleton of an old bicycle, a bicycle seat and a large container where to place the laundry to be washed. A small drain valve empties the container which is filled with clean water at every laundry. The soaking operation only lasts about ten minutes and pedaling five minutes to wet out the clothes. For the final rinse and spin, which helps speed drying clothes, a powered pedal for four minutes is needed.

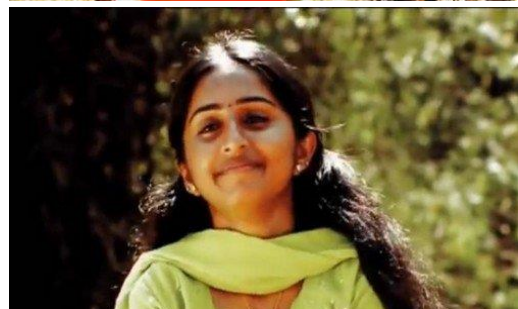
To implement the project the young inventor was supported by a local automobile repair shop. A drawing on paper turned in little time into a useful and functional electricity-free appliance.

It is a perfect tool to replace hand washing for those families living in areas that have no access to electricity and therefore cannot have common washing machines. Beside this, it is also a useful tool to save energy, resources, money and to keep in form by pedaling.

To know more

[Article in telegraphindia.com](#)

[Article in collegeaffaires.in](#)



[Article in thebetterindia.com](http://thebetterindia.com)

[Article in indiatoday.in](http://indiatoday.in)

[Article in ecoideaz.com](http://ecoideaz.com)

[Article in greenme.it](http://greenme.it)

